

Fitting instruction Crash-Pads Suzuki GSX1300R Hayabusa '08- part-no.: 550S120

Important: If you are not a trained motorcycle mechanic stop now! Ask a local motorcycle shop to do the work for you!

Please take extra care!

You have to mount the cras-pads one side after the other! Do not loose more than one engine mounting bolt at the same time! The fairing has to be drilled on both sides!

1. Mark the position on the Fairing (dimension are shown in the pictures).

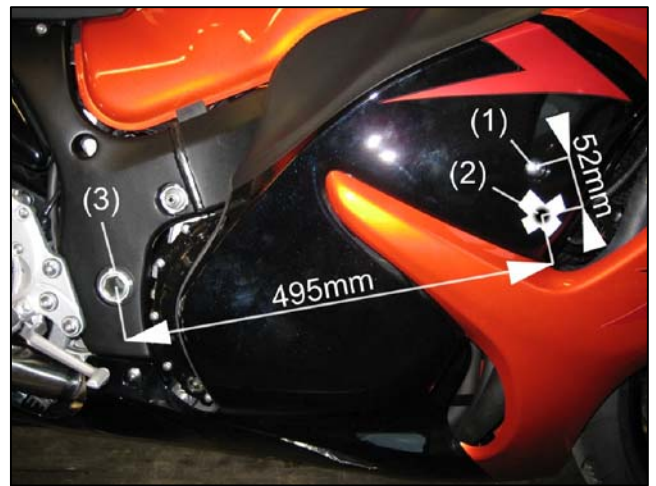
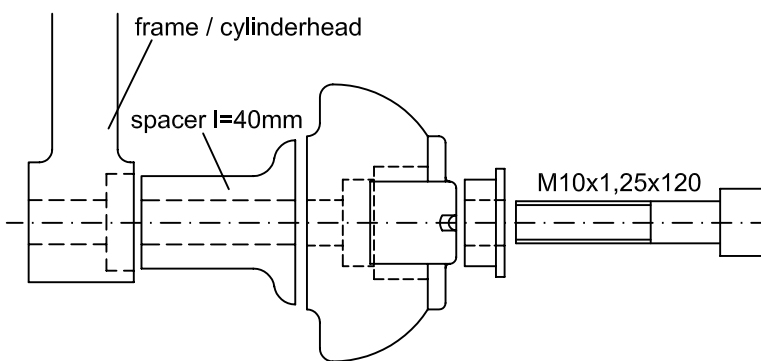
(1): upper fairing bolt; (2): bore; (3): axle, swingarm.

2. At first, drill a small hole(2) and check the alignment to the mounting point. Then enlarge the hole until the fairing doesn't scrub or jam the spacer. You can correct any mismatch in the alignment while enlarging the hole.

The tightening torques refer to the manufacturer's instructions!

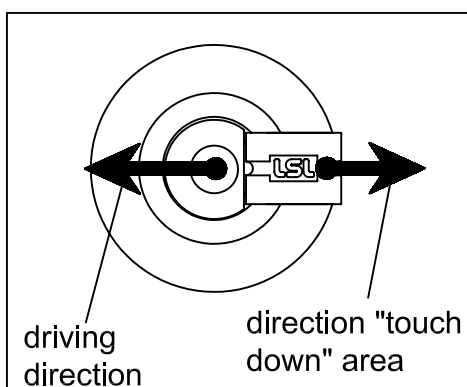
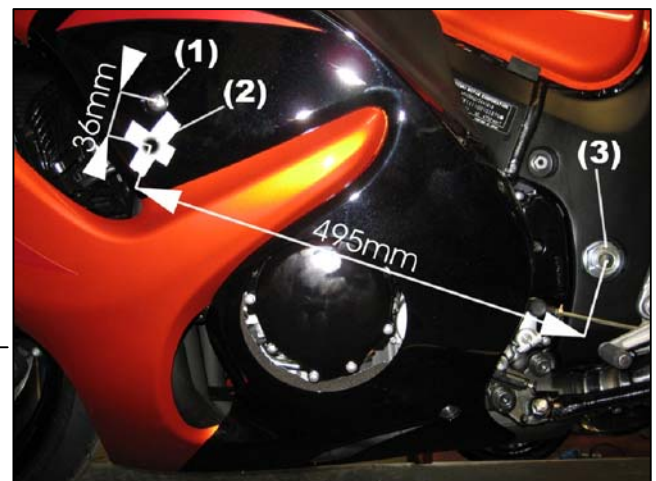
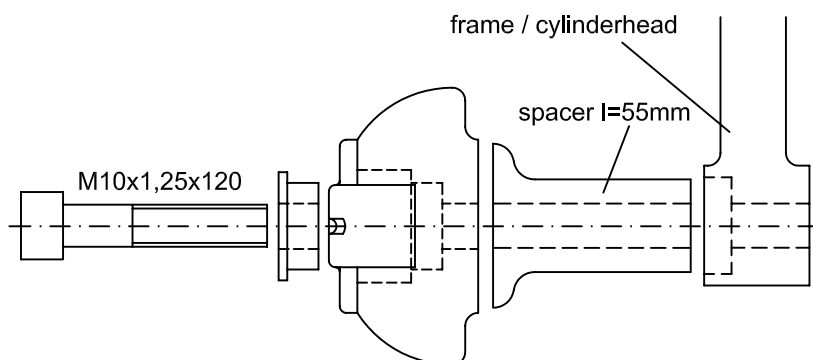
Fitting on the right side:

(View from rear)



Fitting on the left side:

(View from rear)



LSL-Motorradtechnik GmbH • D-47809 Krefeld

www.lsl.eu

Stand: 04/2008